



# Mortlake Wind Farm – Compliance Testing during September 2023.

Mortlake Wind Farm was undergoing compliance testing in September 2023.

A neighbouring wind farm at Dundonnell was not.

Comparing the operating capacity of the two wind farms, Mortlake South was working at a lower % capacity than Dundonnell.

A question for authorities: Is Mortlake South cheating compliance using the dirty trick of curtailing during compliance testing?

September 2023: Dundonnell Wind Farm – Working up to 100% Capacity

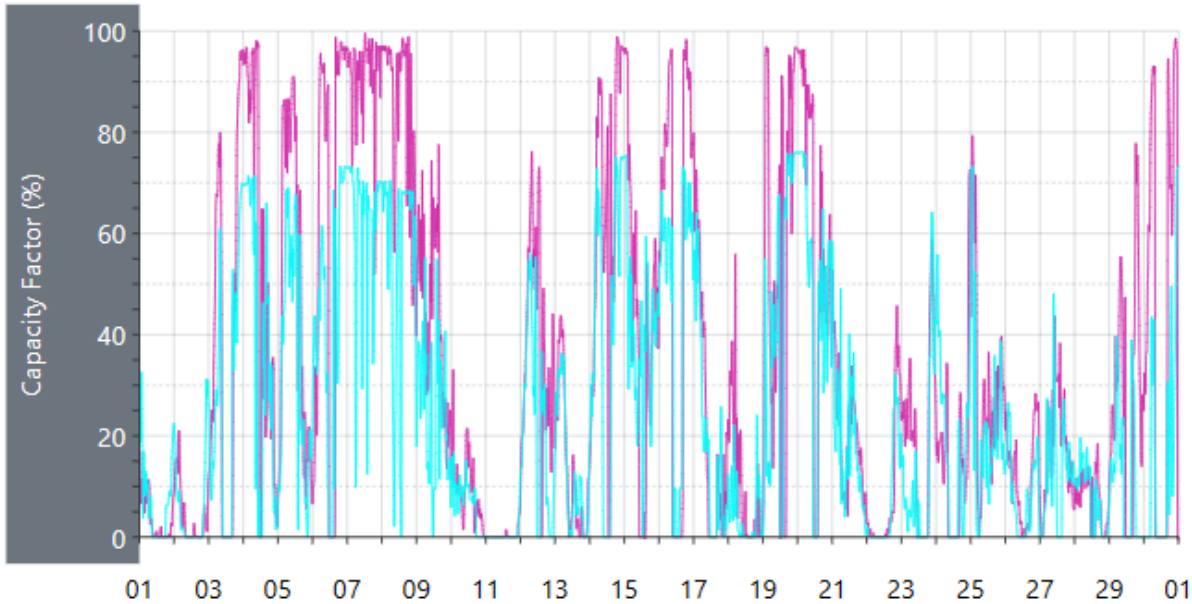
DUNDWF1

September 2023: Mortlake South Wind Farm - Working up to 75% Capacity

MRTLSWF1

## Wind Energy Production During September 2023

% MW



- BANGOWF1
- BANGOWF2
- BOCORWF1
- BODWF1
- CAPTL\_WF
- COLWF01
- CROOKWF2
- CRURWF1
- CULLRGWF
- GULLRWF1
- GULLRWF2
- GUNNING1
- SAPHWF1
- STWF1
- TARALGA1
- WOODLWN1
- WRWF1
- COOPGWF1
- KABANWF1
- KEPWF1
- MEWF1
- BLUFF1
- CATHROCK
- CLEMGPWF
- CNUNDAWF
- HALLWF1
- HALLWF2
- HDWF1
- HDWF2
- HDWF3
- LGAPWF1
- LGAPWF2
- LKBONNY1
- LKBONNY2
- LKBONNY3
- MTMILLAR
- NBHWF1
- PAREPW1
- SNOWNTH1
- SNOWSTH1
- SNOWTWN1
- STARHLWF
- WATERLWF
- WGW1
- WPWF
- CTHLWF1
- GRANWF1
- MUSSELR1
- WOOLNTH1
- ARWF1
- BALDHW1
- BRYB1WF1
- BRYB2WF2
- BULGANA1
- CHALLHWF
- CHYTW1
- CROWLWF1
- DIAPURWF1
- DUNDWF1
- DUNDWF2
- DUNDWF3
- EAINWF1
- KIATAWF1
- MACARTH1
- MERCER01
- MLWF1
- MOORAWF1
- MRTLSWF1
- MTGELWF1
- MUWAWF1
- MUWAWF2
- OAKLAND1
- PORTWF
- SALICRK1
- STOCKYD1
- WAUBRAWF
- YAMBUKWF
- YENDWF1
- YSWF1
- Subtotal
- Total
- NSW1
- QLD1
- SA1
- TAS1
- VIC1